

FACILITY NEEDS / CHALLENGES

MEADOWVIEW MIDDLE SCHOOL



SPARTA AREA SCHOOL DISTRICT

Meadowview Middle School Main Office / Secure Entry

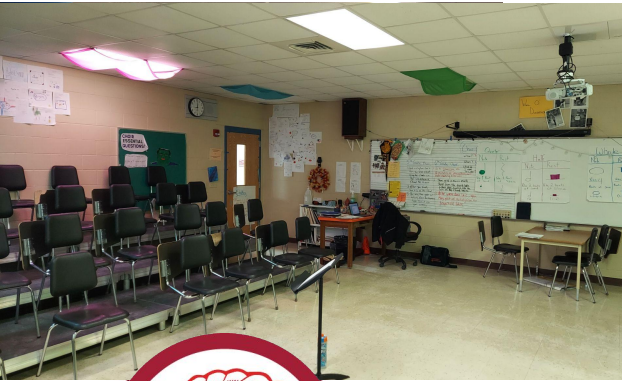
- Building originally had separate offices and entrances for the elementary and middle school sides of the building. Now, as only a middle school, the current configuration doesn't function efficiently.
- School uses a camera and buzzer system to control access to the building without direct entry into the office (visitors have full access to the building once buzzed in).
- Goal would be to create secure entry check-in like other district buildings (i.e. Herrman & Southside).
- Improvements/signage are needed on the exterior to indicate which doors are the main entry.



Meadowview Middle School Music / Choir Classrooms

- Building originally had separate music spaces for elementary and middle school students.
- Future project could combine the spaces into one middle school music / choir room to better support participate and program needs.
- Renovations could also be made to increase size of restrooms and concession area supporting the main public areas of the building.

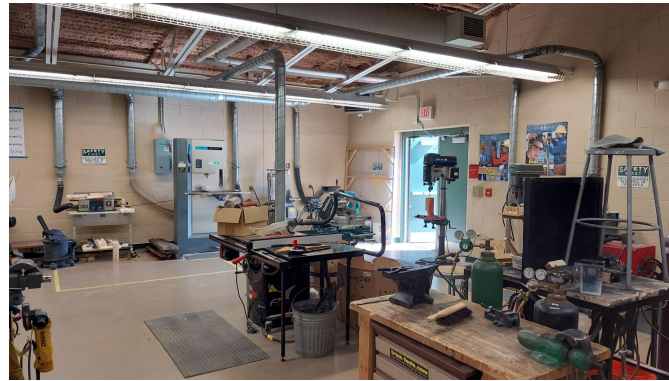
Note: This scope of work is part of the district's long-range facility planning and is not part of the current work being considered.



Meadowview Middle School Tech Ed (Shop)

- With a growing interest in project-based learning and vocational skills, the district has seen increased interest in Tech Ed classes.
- Participation in middle school Tech Ed classes serve to lead into the more advanced coursework offered at the high school level.
- Current classrooms lack space to support additional equipment and flexibility in project types.

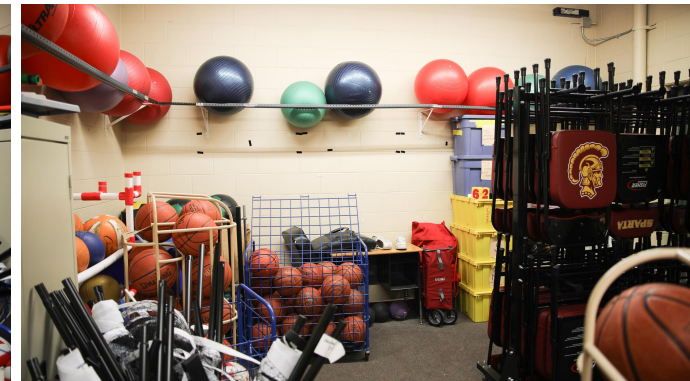
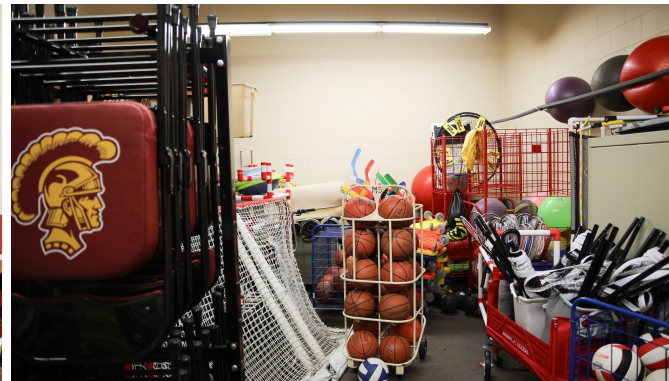
Note: This scope of work is part of the district's long-range facility planning and is not part of the current work being considered.



Meadowview Middle School Weight Room & Fitness

- The school was built without a space for weights and fitness.
- A small storage room was converted to allow some space for equipment.
- Additional space is needed for equipment and to accommodate a full class of students at once.

Note: This scope of work is part of the district's long-range facility planning and is not part of the current work being considered.



Meadowview Middle School Library

- Building originally had separate library spaces for elementary and middle school students.
- The goal would be to renovate the original elementary library space to make better use of the space as a middle school.
- The middle school library needs flexible furniture and reconfiguration to create a makerspace.

Note: This scope of work is part of the district's long-range facility planning and is not part of the current work being considered.



Meadowview Middle School Site and Outdoor Athletics

- A track is needed for middle school students practice and competitions.
- Softball fields are needed for district practice and competition.
- Tennis courts require expansion to host regional and sectional events and improvements are needed for handicap accessibility.
- Additional green space is needed for practice space for soccer, football, etc.

Note: This scope of work is part of the district's long-range facility planning and is not part of the current work being considered.



Meadowview Middle School Facility Study Summary

▼ ITEMS IN POOR CONDITION
Substantial visible damage, wear or need for repair; or identified as containing potential asbestos

- Interior wall repair at select/identified areas
- Ceiling replacement at select/identified areas
- Flooring replacement at select/identified areas
- Casework at identified areas
- Exterior doors at identified areas
- Exterior wall repair at select/identified areas
- Exterior fixtures at identified areas
- Potential asbestos remediation
- ADA improvements at identified areas

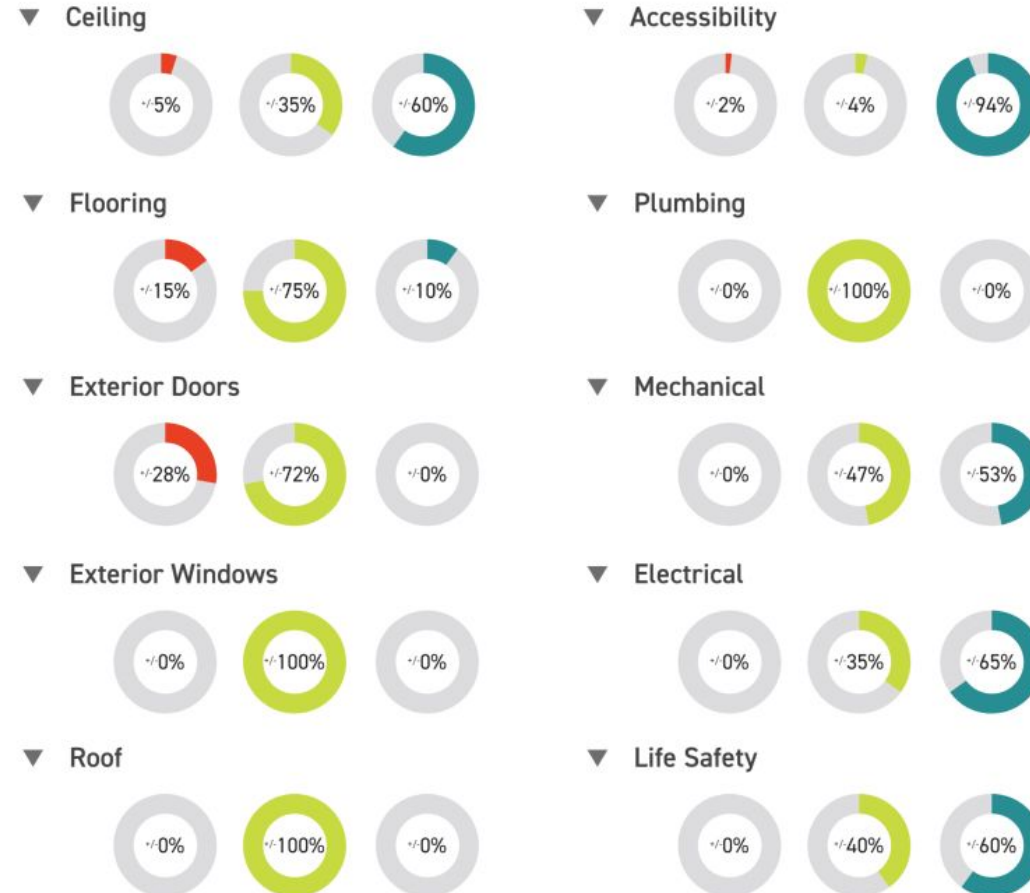
▼ ITEMS IN FAIR CONDITION
Some visible damage, wear or need for repair

- Domestic water system
- Sanitary system
- Storm system
- Natural gas system
- Plumbing equipment and fixtures
- HVAC and control systems
- Lighting fixtures, controls, and wiring devices
- Clock system and data/telephone
- Emergency egress lighting
- Fire alarm and public address system
- Ceiling replacement at identified areas
- Flooring replacement at identified areas
- Exterior doors at identified areas
- Exterior windows at identified areas

▼ ITEMS IN GOOD CONDITION
No visible damage, wear or need for repair

- Boiler plant and pumps
- Electrical service and panelboards
- Emergency generator
- Access control and security system
- Exterior doors at identified areas

+ OVERALL BREAKDOWN



Full report is available on the district website

